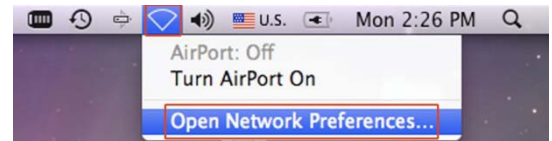


Connecting to the HWS Wireless Network Mac OS 10.6

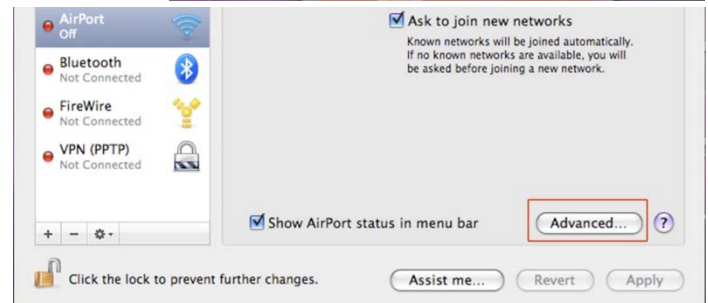
3/17/2011

To connect to the HWS wireless network:

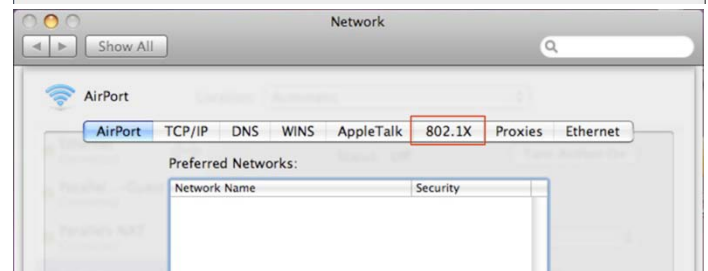
1. In the upper right of your screen, click **Airport > Open Network Preferences**



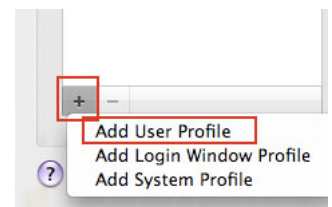
2. In the lower right corner click **Advanced**



3. Click the **802.1x** tab



4. On the bottom left of the box click the **plus sign (+)** and choose to add a **User Profile**

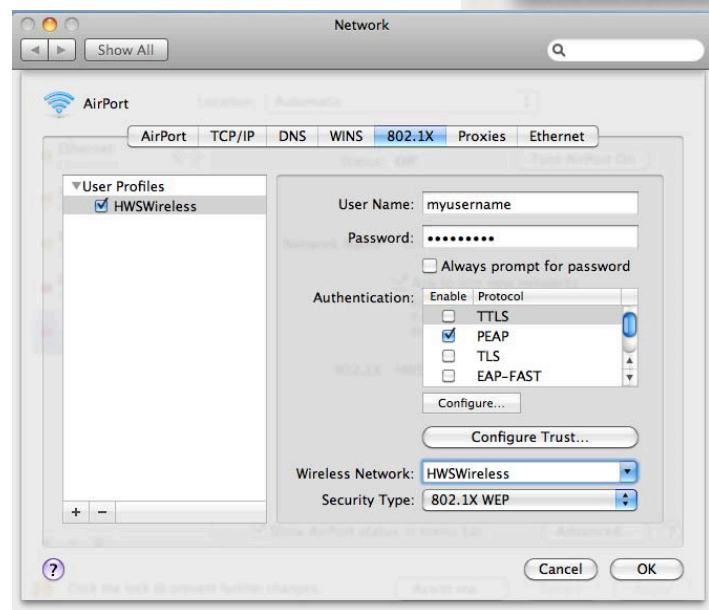


5. At the flashing cursor, name the configuration **HWSWireless**

6. Enter your **HWS User Name** and **Password**

7. ~~WV] ^PY ùY ã^|••Á Á@Á~~
Wireless Network field

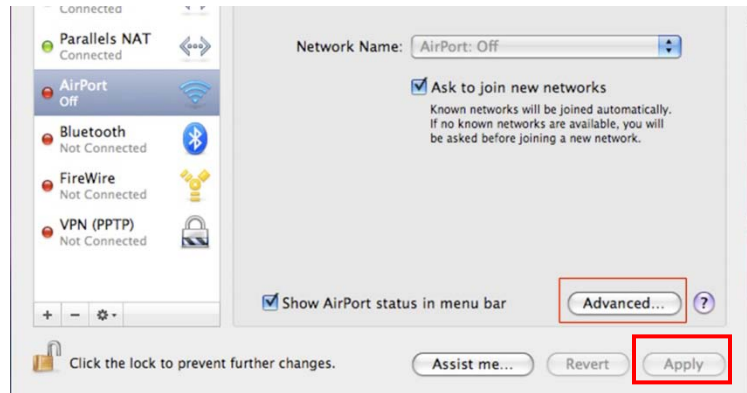
8. Under Authentication, uncheck all items except for **PEAP** then click **OK**



Connecting to the HWS Wireless Network Mac OS 10.6

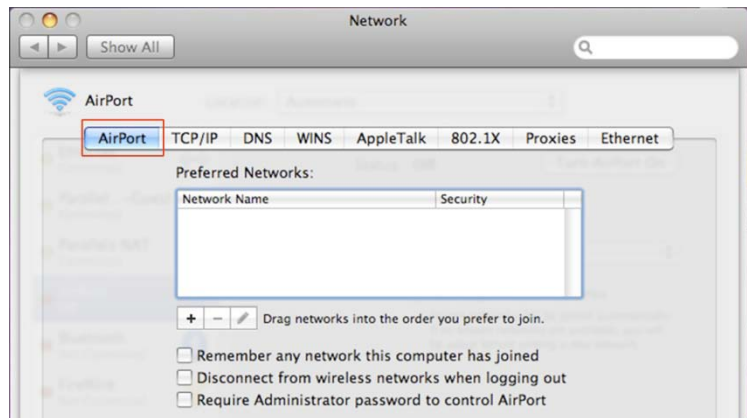
3/17/2011

9. Click **Apply**

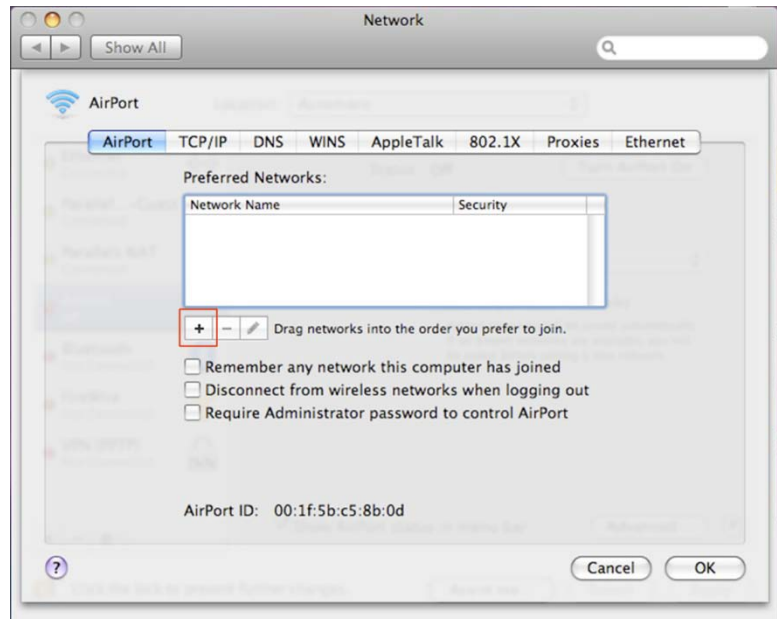


10. Click **Advanced**

11. Click the **AirPort** tab



12. To add a new network
Click **plus sign (+)**



Connecting to the HWS Wireless Network Mac OS 10.6

3/17/2011

13. In **Network Name** enter,
HWSWireless

14. In the **Security** drop-down
menu, select **802.1x WEP**



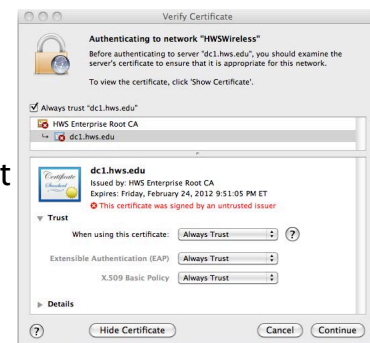
15. Click **Add**

16. In the **Preferred Networks** box, verify that the **HWSWireless** entry is at the top of the network list

HWSWireless should be listed first to ensure that it will be used to enter the campus wireless network

17. Click **OK** and **Apply**

18. When the wireless is turned on the first time a prompt to **Verify Certificate** will appear, expand the arrow next to **Trust** and be sure "**Always Trust**" is selected in each pull down, click **Continue**



Open **Safari** browser and go to a non- HWS web site to confirm connectivity; if the site does not open, try restarting your computer.

If you have any trouble with the wireless setup process, please contact the Help Desk in the Library Learning Commons or 315- 781- 4357 (ext. 4357/HELP on campus) or helpdesk@hws.edu.