

Wired Network Authentication

Configuring 802.1x for Mac OS 10.4

8/26/2009

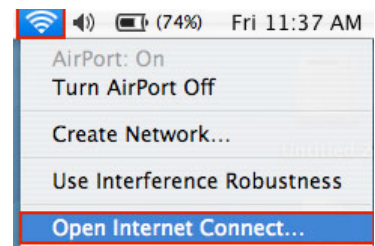
Connect to the HWS wired network, follow the steps below:

Note: To only have Internet access, no configuration is required, just plug in a network cable. These steps are for accessing HWS network resources on campus.

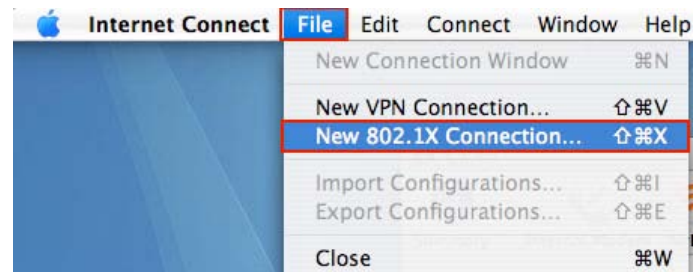
1. Click on the Apple dropdown menu in the upper left hand corner and select Software Update

Note: At the update prompt, login with your computer username (not your HWS account). Updates are important for getting your computer on the wireless network.

2. Open the **Airport menu** from the menu bar and click **Open Internet Connect**

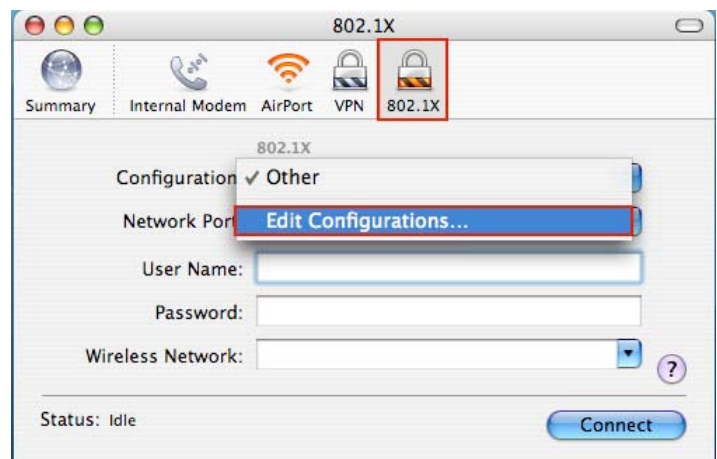


3. In Internet Connect, go to **File > New 802.1x Connection**



4. In the 802.1X window click the **802.1x padlock**

5. In the 802.1X tab, select the **Configuration** drop-down menu and select **Edit Configurations** and enter a name for the configuration



6. Configure the fields with the information below:

- Network Port: **Built-in Ethernet**
- Username: your HWS **username**
- Password: your HWS **password**
- Authentication: make sure only **PEAP** is checked
- Click **OK**

Description: **HWS Secure**

Network Port: **Built-in Ethernet**

User Name: **userid**

Password: **.....**

Wireless Network: [Dropdown]

On	Protocol
<input type="checkbox"/>	TTLS
<input type="checkbox"/>	TLS
<input type="checkbox"/>	EAP-FAST
<input checked="" type="checkbox"/>	PEAP
<input type="checkbox"/>	LEAP

Configure...

Select supported authentication protocols above and then order them appropriately.

Cancel **OK**

7. Click **Connect**

Note: Your computer may ask you if you want it to remember your username and password in your keychain

8. Mac OS X will then request a connection to the secure HWS network. You will be prompted with a certificate

Click the **Show Certificate** button

Verify Certificate

802.1X Authentication

The server certificate could not be validated because the root certificate is missing.

? **Show Certificate** Cancel Continue

9. The Verify Certificate dialog box will now show the details of the certificate.

Under the Trust Settings options, set the **When using this certificate** field to: **Always Trust**

Note: This will allow you to trust the certificate in the future without being prompted.

Verify Certificate

802.1X Authentication

The server certificate could not be validated because the root certificate is missing.

Always trust these certificates

dc2.hws.edu

Trust Settings

When using this certificate: **Always Trust** ?

Extensible Authentication (EAP) **Always Trust**

X.509 Basic Policy **Always Trust**

? Hide Certificate Cancel **Continue**

10. Click the **Continue** button. You should now be connected to the HWS secure wired network (if not, try restarting the computer)

If you have any trouble with the above process, please contact the Help Desk in the Library Learning Commons or 315-781-4357 (ext. 4357/HELP on campus) or helpdesk@hws.edu.